

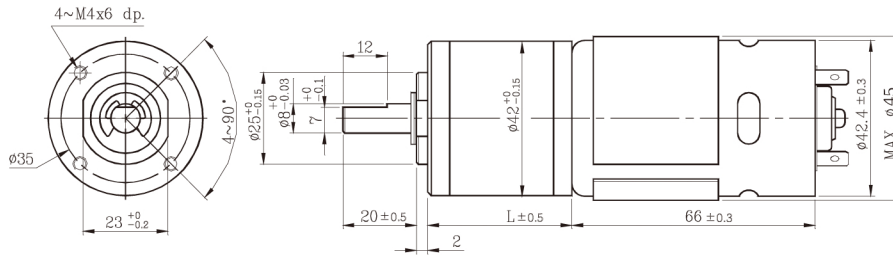
JCI-42GM 01&02 TYPE

엔코더 장착 가능 51Page 참고

- 사용 습도(Operating relative humidity) : 20% ~ 85%
- 사용 온도(Operating temperature) : -10°C ~ +60°C



제품도면 (Dimension)



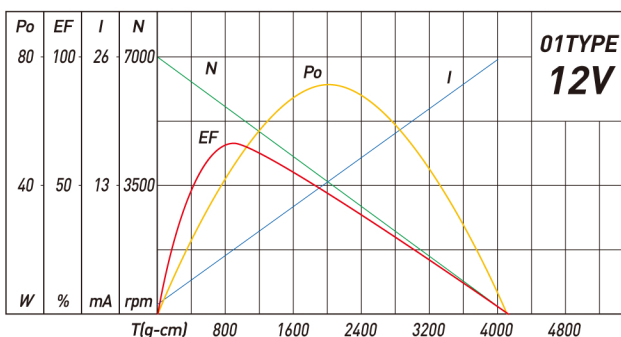
감속모터 사양 (Geared Motor Specification)

감속기 길이 (mm) Gear Head L		32.5				39.2				45.9				52.6				59.3			
감속비 Reduction ratio		1/4	1/14	1/17	1/24	1/49	1/61	1/84	1/104	1/144	1/212	1/294	1/504	1/624	1/720	1/864	1/1062	1/1470	1/2500	1/3000	1/3600
01 Type 12v	정격토크(kg-cm) Rated torque	2.2	6.5	8.1	10	18	18	18	20	20	25	25	30	30	30	30	30	30	30	30	30
	정격 회전수(RPM) Rated speed	1400	405	325	248	120	98	76	63	45	31	24	13.5	10.9	9.5	8.0	6.5	4.6	2.7	2.3	1.9
02 Type 24v	정격토크(kg-cm) Rated torque	1.8	5.4	6.6	9.5	16	18	18	20	20	25	25	30	30	30	30	30	30	30	30	30
	정격 회전수(RPM) Rated speed	1445	420	340	240	122	102	77.5	63	47	31	23.8	13.5	10.9	9.5	8.0	6.5	4.6	2.7	2.3	1.9

모터부 사양 (Install motor specification)

01Type Motor (DC 12v)

• 정격 토크 Rated torque	700	(gf-cm)
• 정격 회전수 Rated speed	5,700	(RPM)
• 정격 전류 Rated current	5,500	(mA)
• 무부하 회전수 No load speed	7,000	(RPM)
• 무부하 전류 No load current	900	(mA)
• 정격 출력 Rated output	41.3	(W)



02Type Motor (DC 24v)

• 정격 토크 Rated torque	570	(gf-cm)
• 정격 회전수 Rated speed	5,900	(RPM)
• 정격 전류 Rated current	2,100	(mA)
• 무부하 회전수 No load speed	7,000	(RPM)
• 무부하 전류 No load current	500	(mA)
• 정격 출력 Rated output	34.7	(W)

