



S.A. Stabio, 14/01/05

DATA SHEET

Customer: JC International
 Type: M25
 Drawing: P8801

Power supply		220V		60Hz		2 μ F		Speed 1		
NO-LOAD		LOAD						LOCKED ROTOR		
W	A	W	A	N.cm.	Rpm	W out	Eft. %	W	A	N.cm.
55.10	0.251	59.27	0.269	4.914	1700	8.74	14.75	93.79	0.422	23.698
		62.55	0.284	8.625	1650	14.89	23.81			
		65.77	0.298	11.673	1600	19.56	30.22			
		68.74	0.312	14.698	1550	23.84	34.68			
		71.77	0.323	17.079	1500	26.81	37.36			
		74.10	0.333	19.210	1450	29.15	39.34			
		76.20	0.344	20.957	1400	30.70	40.29			
		78.74	0.352	22.435	1350	31.70	40.25			
		79.76	0.359	23.663	1300	32.19	40.36			
		80.67	0.363	24.283	1250	31.77	39.38			

V	W	A	μ F	N.cm.	Rpm	m ³ H	Pa	Tested equipment	Fan	Δ M	Δ A	RT
220	62.36	0.296	2		1591			Free air	160x62			
220	78.69	0.363	2		1271	425	0	Scroll	160x62			
220	77.25	0.356	2		1325	400	27	Scroll	160x62			
220	73.51	0.341	2		1414	350	77	Scroll	160x62			
220	69.90	0.326	2		1489	300	122	Scroll	160x62			
220	67.19	0.313	2		1538	250	141	Scroll	160x62			
220	64.83	0.303	2		1560	200	153	Scroll	160x62			
220	62.51	0.295	2		1603	150	164	Scroll	160x62			
220	61.14	0.285	2		1633	100	181	Scroll	160x62			
220	78.56	0.363	2		1261			Scroll f.a.	160x62			
230	86.30	0.378	2		1300			Scroll f.a.	160x62	64.0	52.2	24
220	58.90	0.273	2		1661			Scroll p.c.*	160x62			
230	65.81	0.292	2		1674			Scroll p.c.* *Partially closed	160x62	69.6	63.4	24

This measurement represent the theoretical performance of this samples only.



S.A. Stabio, 14/01/05

DATA SHEET

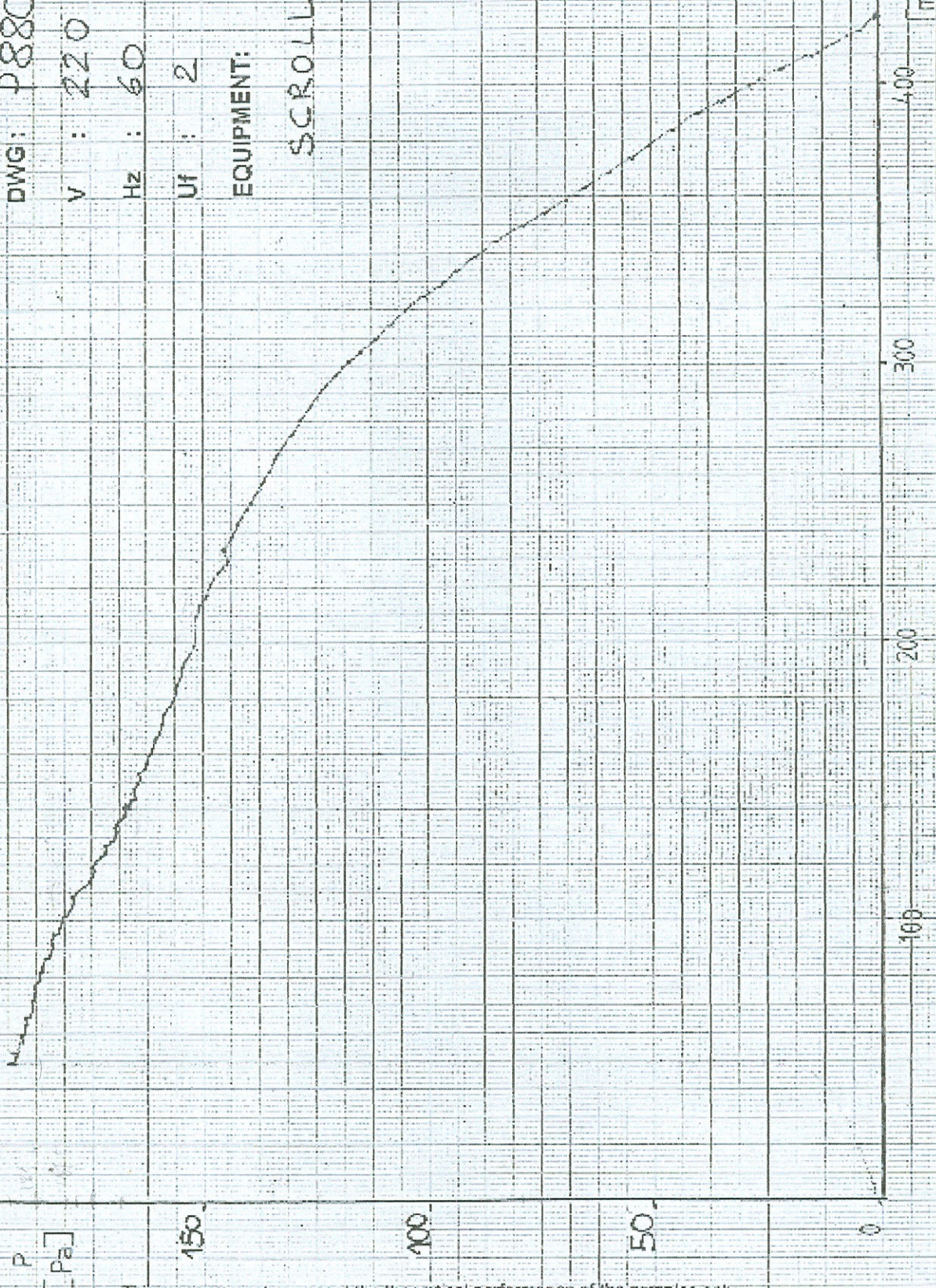
Customer: JC International
 Type: M25
 Drawing: P8801

Power supply		220V		50Hz		2 μ F		Speed 1		
NO-LOAD		LOAD						LOCKED ROTOR		
W	A	W	A	N.cm.	Rpm	W out	Eft. %	W	A	N.cm.
43.38	0.230	46.79	0.236	4.074	1450	6.18	13.21	89.10	0.405	25.675
		50.41	0.247	8.629	1400	13.64	25.05			
		53.67	0.259	12.500	1350	17.66	32.90			
		57.09	0.270	15.552	1300	21.57	37.78			
		61.60	0.284	18.981	1250	24.83	40.01			
		63.84	0.294	21.299	1200	26.75	41.90			
		66.74	0.306	23.398	1150	28.16	42.19			
		69.68	0.317	25.083	1100	28.87	41.44			
		72.11	0.328	26.357	1050	29.00	40.21			
		74.19	0.337	27.265	1000	29.53	38.47			

V	W	A	μ F	N.cm.	Rpm	m ³ H	Pa	Tested equipment	Fan	Δ M	Δ A	RT
220	50.81	0.261	2		1374			Free air	160x62			
220	63.39	0.303	2		1179	392	0	Scroll	160x62			
220	60.62	0.291	2		1237	350	39	Scroll	160x62			
220	58.17	0.286	2		1294	300	69	Scroll	160x62			
220	55.61	0.273	2		1325	250	99	Scroll	160x62			
220	53.39	0.267	2		1357	200	111	Scroll	160x62			
220	52.18	0.264	2		1380	150	117	Scroll	160x62			
220	51.55	0.261	2		1404	100	127	Scroll	160x62			
220	63.36	0.303	2		1174			Scroll f.a.	160x62			
230	70.05	0.318	2		1200			Scroll f.a.	160x62	68.5	48.1	24
220	48.35	0.253	2		1419			Scroll p.c.*	160x62			
230	54.85	0.279	2		1424			Scroll p.c.*	160x62	52.9	62.4	24

This measurement represent the theoretical performance of this samples only.

TYPE: M25
 DWG: P8801
 V : 220
 Hz : 60
 Uf : 2
 EQUIPMENT:
 SCROLL



This measurement represent the theoretical performance of the samples only.

Filed by
 Checked by
 Approved by

MES S.A.
 MICROMOTORIE ELETTRICI SVIZZERI
 DATE 12-4-05

Diagram
 Drawing

Page
 of pages

TYPE: M25

DWG: P8801

V : 220

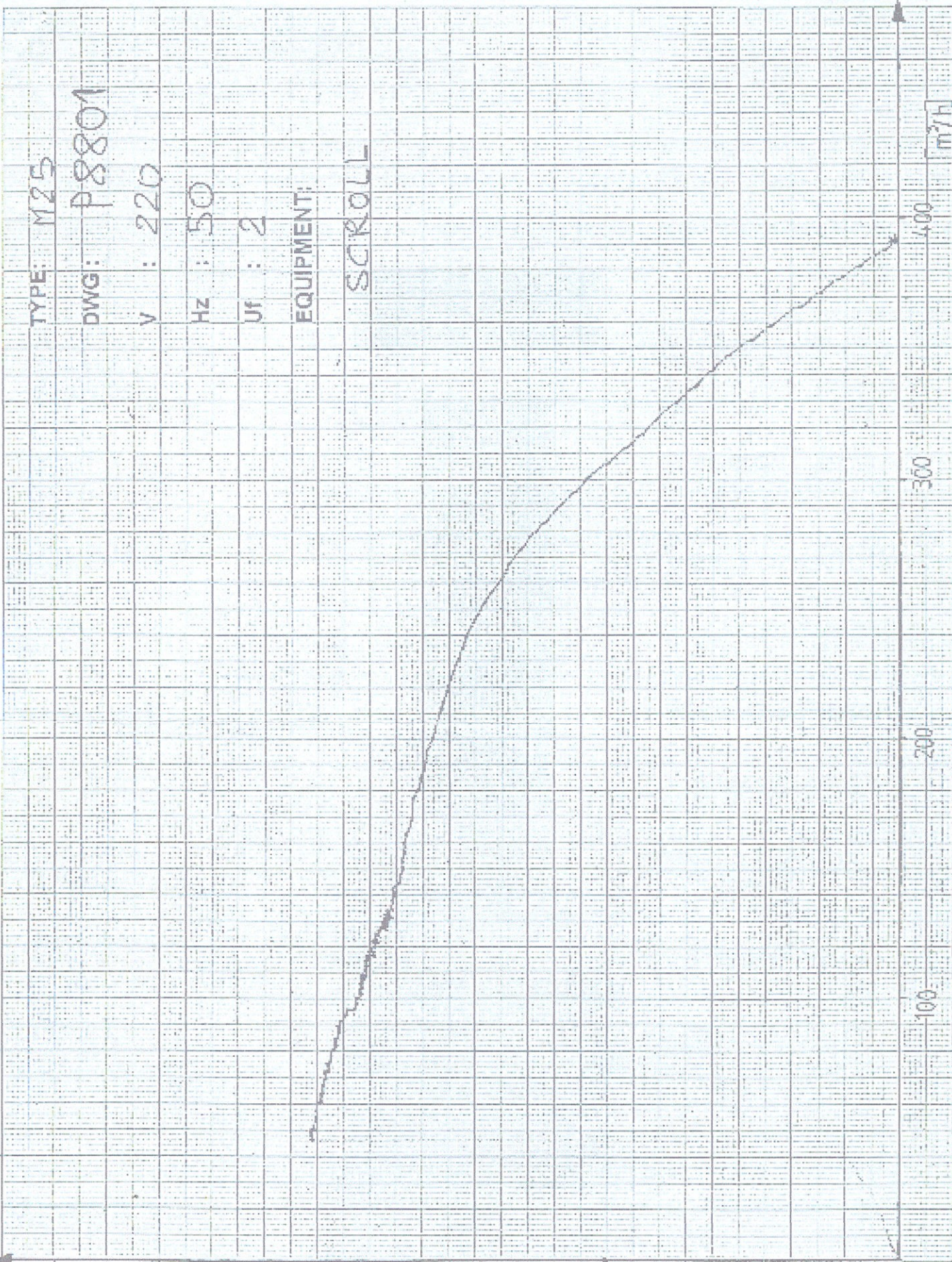
Hz : 50

Uf : 2

EQUIPMENT:

SCROLL

Filled in by
Checked by
Approved by



This measurement represent the theoretical performance of the samples only.

MES S.A.
MICROMOTORI ELETTRICI SVIZZERI

DATE: 12-1-05

Diagram
Drawing

Page
of pages

MES S. a.

TIPO MOTORE : M25

ALIMENTAZIONE : 220V 50/60Hz 20F

MATRICOLO : P8801

DATA : 13/01/2005

220V 50Hz ———

220V 60Hz - - - - -

